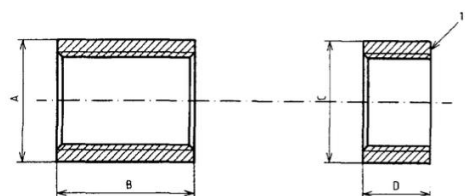


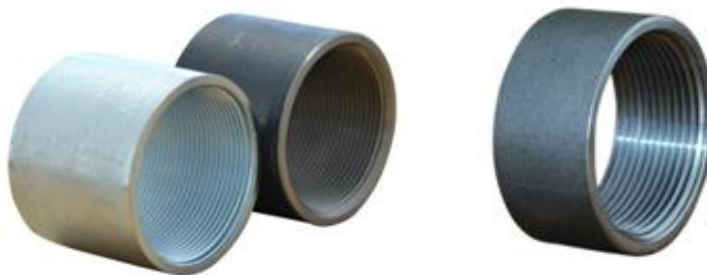
## DIN2986 / EN 10241 STEEL PIPE SOCKETS / STEEL PIPE COUPLINGS

Steel pipe socket and half socket, equal, type medium



Socket

Half socket



Nominal size	O.D.	Length	O.D.	Length
DN	A mm	B mm	C mm	D mm
6	15.0	17	15.0	8
8	18.5	25	18.5	11
10	21.3	26	21.3	12
15	26.6	34	26.6	15
20	31.8	36	31.8	17
25	39.5	43	39.5	20
32	48.3	48	48.3	22
40	54.5	48	54.5	22
50	66.2	56	68.0	26
65	82.0	65	84.2	30
80	95.0	71	98.4	34
100	121.4	83	124.0	40
125	146.3	92	149.0	44
150	173.3	92	177.0	44

Steel Pipe Sockets Conforms to DIN 2986,EN10241

Material: Seamless steel pipe

Thread: DIN2999,ISO7/1,BS21

Finish: Black or Galvanized